



Liebherr 120 Excavator



Performance

Wheelbase	7.20 m
Industrial – Type	
Angled Mono Boom	15 m
Industrial - Type stick	12 m
Maximum Reach	25 m
Maximum Heap Height	22.5 m
Maximum Load	7 ton
Operating Weight	135 ton
Engine Output	400 kW / 540hp

With 180-degree swivel radius, the LH 120 can easily achieve a loading capacity of 300 tons / hr of bulk load and unloading

Dimensions

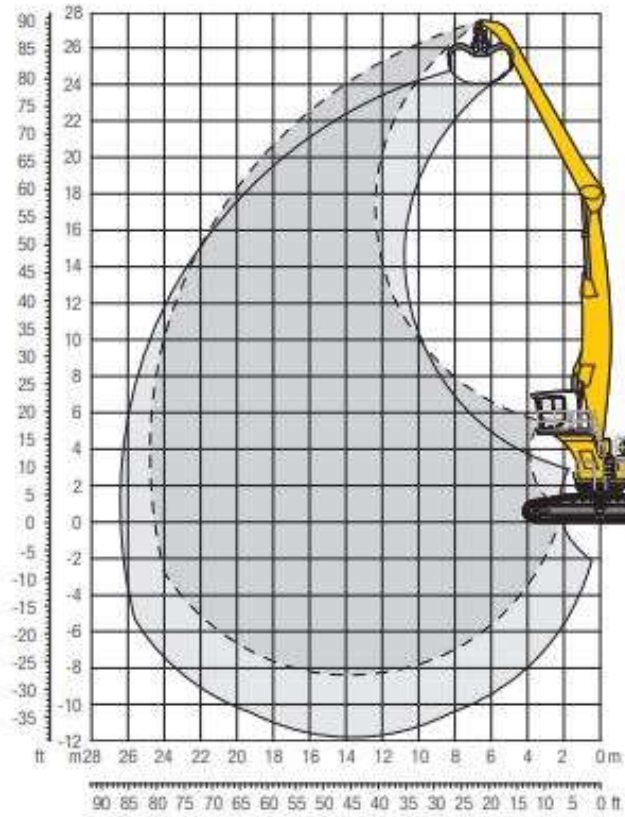
Attachments include:

Rock / Wood Grapple	
5 Tine Split Spoon Bucket	
Clam Bucket	5 yard
Clam Bucket	2.5 yard
Lifting Hook	75,000 lbs
Stick Extension	11 ft
Stick Extension	25 ft

Contact

Picton Terminals
 info@pictonterminals.ca
 Office: 613-471-1112
 24/7: 613-929-4880

Lift Chart



Contact

Picton Terminals
info@pictonterminals.ca
Office: 613-471-1112
24/7: 613-929-4880